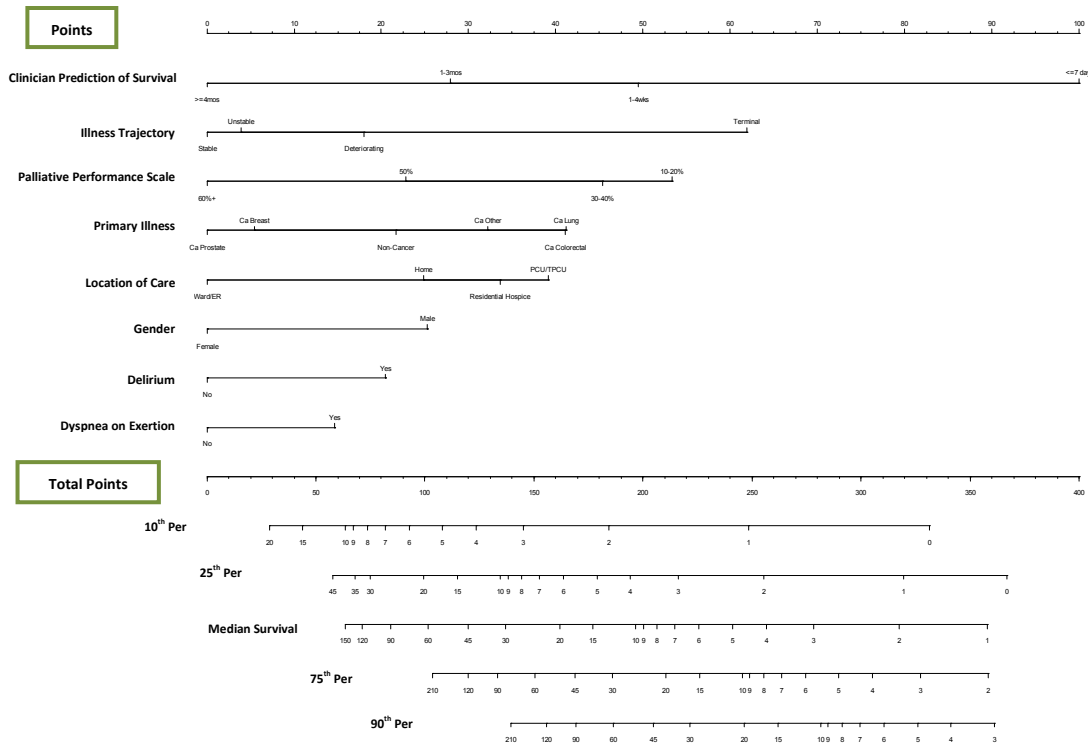


Prognostat Nomogram & Survival Table for *Patients Already Deemed Palliative*



Procedure to Calculate Prognostat

Using the definitions in lower left table, you can use either of 2 methods to calculate percentiles:

- Nomogram**
 - Draw a line upwards to obtain Point Scores for each Category eg. age, gender, etc
 - Sum the **Category Point Scores** and mark the total score on the 'Total Point' line
 - Now draw a vertical line down from the **Total Point Score** to see median & survival percentiles
 - The width of each category line represents the proportionate contribution to the overall survival prediction when all are analysed together (eg. primary illness stronger than gender).
- Use the **Point Tables** below
 - Obtain a **Category Point Score** for each and then sum these to obtain a Total Points Score
 - Locate the **Total Points Score** (to the closet 10-point value) and view the Survival Percentiles

Category Point Scores for Prognostat		
Category	Factor	Points
Gender	Female	0 points
	Male	25 points
Primary Illness	Ca Prostate	0 points
	Ca Breast	5 point
	Non-Cancer	22 points
	Ca Other	32 points
	Ca Colorectal	41 points
	Ca Lung	41 points
Palliative Performance Scale (PPS)	PPS ≥60%	0 points
	PPS 50%	23 points
	PPS 30-40%	45 points
Illness Trajectory	PPS 10-20%	53 points
	Stable	0 points
	Unstable	4 points
Clinician Prediction of Survival (CPS)	Deteriorating	18 points
	Terminal	62 points
	≥4mos	0 points
Delirium	1-3mos	28 points
	1-4wks	49 points
	≤7days	100 points
Dyspnea on Exertion	No	0 points
	Yes	15 points
Location of Care	Ward/ER	0 points
	Home	25 points
	Residential Hospice	34 points
	Acute Tertiary Pall Care Unit	39 points

Total Points Ranges	# Days Likelihood until Death by Percentiles				
	10 th	25 th	Median	75 th	90 th
<40	20	-	-	-	-
40's	15	>45	-	-	-
50's	15	45	>150	-	-
60's	10	35	150	-	-
70's	8	30	120	-	-
80's	7	30	90	-	-
90's	6	30	90	>210	-
100's	5	20	60	210	-
110's	5	15	60	210	-
120's	4	15	45	120	>210
130's	4	10	30	90	210
140's	3	8	30	90	210
150's	3	7	30	60	120
160's	3	6	20	45	90
170's	3	5	15	45	90
180's	2	5	15	30	60
190's	2	4	10	30	60
200's	2	4	9	30	45
210's	2	4	7	20	45
220's	2	3	6	15	30
230's	2	3	6	15	30
240's	1	3	5	10	20
250's	1	2	4	8	20
260's	1	2	4	7	15
270's	1	2	3	6	15
280's	1	2	3	6	10
290's	1	2	3	5	8
300's	1	2	3	4	7
310's	1	1	2	4	6
320's	1	1	2	3	5
330's	0	1	2	3	5
340's	-	1	2	3	4
350's	-	1	1	2	4
360's	-	0	-	-	3

Definitions	
Clinician Prediction of Survival (CPS)	<ul style="list-style-type: none"> Taking into account the patient's history, the present stage of illness, potential for treatment response, physical assessment and overall clinical experience, CPS is the overall judgment of the likelihood of dying within time periods listed
Australia Illness Trajectory	<p>STABLE</p> <ul style="list-style-type: none"> Symptoms are adequately controlled by established management Functional status remains same or may improve Further interventions to maintain symptom control & quality of life planned as needed <p>UNSTABLE</p> <ul style="list-style-type: none"> A new unexpected problem or a rapid increase in severity of existing problems, either of which require an urgent change in management or treatment <p>DETERIORATING</p> <ul style="list-style-type: none"> Gradual worsening of existing symptoms, functional status or the development of new but expected problems. These require the application of specific plans of care and regular review but not urgent or emergency treatment. <p>TERMINAL</p> <ul style="list-style-type: none"> Death is likely in a matter of days or a week or so No acute interventions are planned or required
Palliative Performance Scale (PPS)	<ul style="list-style-type: none"> PPS scores range from PPS 100% to PPS 0%; see PPS definitions for details
Primary Illness	<ul style="list-style-type: none"> Using 4 common cancers plus other cancer plus non-cancer
Location of Care	<ul style="list-style-type: none"> The location where clinical assessment is completed as part of Prognostat
Delirium	<ul style="list-style-type: none"> Present=mild, mod. or severe Acute brain syndrome or Confusional State as defined by the ICD-10
Dyspnea on Exertion	<ul style="list-style-type: none"> Difficulty breathing on exertion (mod. or severe on verbal or numerical 4+/10) +/- dyspnea at rest; +/- on O2

- Based on 518 patient scores
- 3 locations Victoria, Edmonton, Nanaimo
- Harrel C-Stat 0.78
- Chi-Square P < 0.001